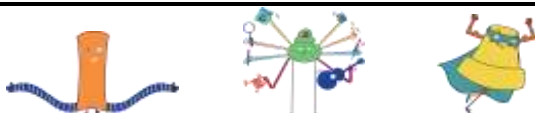


WEEKLY NEWS

<https://www.glebeprimary.co.uk>

Our Nurture, Inspire and Challenge characters.



School Motto:

We nurture and inspire others and challenge ourselves. Be brave, be kind and seize the day!



EYFS

Nursery Pear Class- Etty J, for showing great kindness to others.

Apple-Johnny S-M, for excellent story-making.

Cherry- Jack A, for fantastic phonics!

Y1

Monkey Puzzle- Jeremy P, for superb listening skills.

Beech- Eadie A, for always seeking help when needed and helping others.

Y2

Hornbeam- Lilah D, for great care and kindness.

Willow- Thomas C, for good reasoning skills in maths.

Pine- Keira A, for amazing handwriting improvement.

Y3

Alder- Farhan O, for always working hard in his learning.

Lime- Reggie P, for excellent maths knowledge.

Elm- Jaxon B, for gaining confidence to seek learning help when needed.

Y4

Cedar- Skylar K, for outstanding work on fractions and decimals.

Birch- Louie H, for being a great sports champion in our volleyball lessons.

Sycamore- Albie P, for excellent knowledge of turning fractions into decimals.

Y5

Magnolia- Thomas S, for brilliant presentation and progress with writing.

Oak- Jonny T, for making a fantastic effort with learning focus.

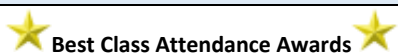
Holly- Aria Y, for presenting a brilliant poster in Geography.

Y6

Hazel- Lilly H, for 100% effort given to every task and lesson

Juniper- Joseph A, for being a positive role-model to his peers.

Star certificates and stickers will be given out next week in our NIC Star Assembly.



Best Class Attendance Awards

Week 3, Spring 2

Classes over 97%:

Y1 Beech Class and Y3 Lime Class.

Whole school attendance is up! 95.4%- Thankyou and good news for children's learning and school engagement!

Neurodiversity Celebration Week

This week, we marked Neurodiversity Celebration Week with a very special Upper Key Stage 2 assembly. Three pupils showed wonderful confidence and embraced the opportunity to share what they would like their peers to know about autism and ADHD.

John-Alieu (6 Juniper) told us that "the positive side of having ADHD is that if there is something that interests me, then I will concentrate more as I find this easier to focus on...

Football is my passion so I watch everything happening really carefully before I decide on my next move". Some of you may have seen Lucy Bronze, one of England's most successful female footballers, in the news this week saying something very similar!

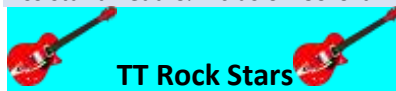
Joshua (6 Hazel) shared that, "Because of my autism, I sometimes struggle with things that others may find easy, but I can also find things to be easy that others find hard." He also shared that his creativity was a real strength - something echoed by Phoebe (5 Holly) who told the children, "My autism makes me creative ... I try to calm myself down by editing memories in my head to make myself laugh!"

Afterwards, Phoebe shared why she took part: "I just wanted my classmates to understand me." This summarised really well why it is so important for us to continue our work on recognising and celebrating the differences in our pupil community.

Well done and thank you to John-Alieu, Joshua and Phoebe for contributing to that ethos this week!

Miss Clare Jackson

Assistant Head & Inclusion Co-ordinator



TT Rock Stars

LKS2 Most Correct Answers

Cemre Y

Oscar R

Sammam S

LKS2 Most Improved

Poppy P

Ethan S

Ezra H

UKS2 Most Improved

Clara W

Noah F

Jesse B

UKS2 Most Correct Answers

Charlie H

Isobel D

Jacob S

Whole School Effort

Oscar R

Louiza P

Milly K

Football Report

On Wednesday, the Glebe Year 4 girl's football team travelled to Littlehampton academy to take part in a football tournament. They had qualified for this tournament by coming 2nd in our local cluster event which in itself was a great achievement! The

tournament featured all of the top 2 school teams that had also qualified in a similar way from all across the south of West Sussex. We started really well in the tournament even though the pitches were very large and goals were hard to come by. The girls never stopped working hard in all of their matches and the teamwork on display was fantastic! After the 8 games played the girls finished in 7th position on the day. Considering this is out of around 80 possible schools could have been there, this is a fantastic achievement! The girls should be really proud of themselves! Mr. Hance, Sports Leader.

The Y5/6 Girls' Football team battled hard against St Mary's on 19th March. The girls unfortunately went 1-0 down, but were able to earn a penalty, where Tilly was able to score an equaliser. After many shots in the second half, and many narrowly missing the back of the net, the girls finished the match at 1-1. Delilah was also voted player of the match! Well done girls for your fantastic team efforts!

Miss. Kelly, P.E. Leader.



Dear Parents and Carers,
Thankyou for taking part in **Active Travel to School Week**.

The best classes were:

2H

4C

6H

Keep up the active journeys to school folks!

King regards

Eco Team

Mrs. Marriott & Mrs. Dudding

Headteacher message

Dear parents and carers,
Well done to Y2 for their Sponsored Skip today. They all tried really hard with their skipping skills and had some fun too! Wonderful performances this week from the Y4 team. Well done to all the children and staff in Y4.



Thank you for supporting and we will share the total raised next week.

We've had a great week. Y2 had a talk from the Fire Service on Wednesday and the fire fighters had to dash off and run to an emergency, which was very exciting! Y4 are getting their play together and every class is starting to get outdoors more with the arrival of Spring. We hope to start using the field next week fully, but this is weather dependent.

I hope all parents and carers received my letter about falling birth rates in the area and the impact on local schools? You can ask for a paper copy at the office if needed.

Thank you to the PTA for organising a Quiz Night for parents on Thursday. We appreciate everyone's support who was able to come along.

Best wishes

Mrs. Crutchfield

Headteacher

EVENTS:

Monday 31st March Topic Share after school- come and share children's books and learning in class. Finishes 4.30pm.

Friday 4th April PTA events:

Easter Egg prizes from the PTA!



KS2 Egg decorating competition: Hard boil an egg at home, decorate it and carefully bring to class in an egg box or similar. Eggs will be on display in classrooms.



EYFS/KS1 Easter Bonnet competition: Make a fancy hat at home. Bonnet/ hat parade 8.40am for Nursery to Y2 for parents/carers.

Friday 4th April Non-Uniform for a donation to the PTA.
Easter holidays Friday 4th April

Back to school Tuesday 22nd April (Mon 21st Bank Holiday)

Thursday 24th April Y5 Swimming begins

Mon 28th April Y3 and Y4 Wacky Races event.

May 12th to 15th Y6 SAT's week.

Friday 16th May School Council Sponsored Walk Event raising money for a new pond and wildlife area. Everyone to wear PE kit to school today. Sponsor forms to go out in May.

Friday 23rd May Non -Uniform for choc and bottle tombola donations (for Summer Fair).

Half term Friday 23rd May

Back to school Tuesday 3rd June

11th to 13th June Y6 Residential Trip to Kent

SPORTS DAYS AT GLEBE:

WEDNESDAY 18TH JUNE 9AM Y5/Y6

WEDNESDAY 18TH JUNE 1.10PM Y1/Y2

THURSDAY 19TH JUNE 9AM Y3/4

THURSDAY 19TH JUNE 1.45PM NURSERY AND RECEPTION CLASSES.

PARENTS AND CARERS WELCOME- PLEASE BRING A BLANKET OR PORTABLE CHAIR.

Friday 27th June Class photos and leaver's photos.

Saturday 28th June PTA Summer Fair! 11am to 3pm.

Monday 14th July Topic Share after school Finishes 4.30pm.

Summer holidays Friday 18th July.



This week's two top playing classes:

3 Elm

2 Willow

Top Speller Certificates go to:

KS1: George N and Harriet B

KS2: Lily R and Billy C

Login here to play: <https://www.edshed.com/en-gb/login>

